



Strade Bianche 2026

🕒 3 nights, 4 days

Overview

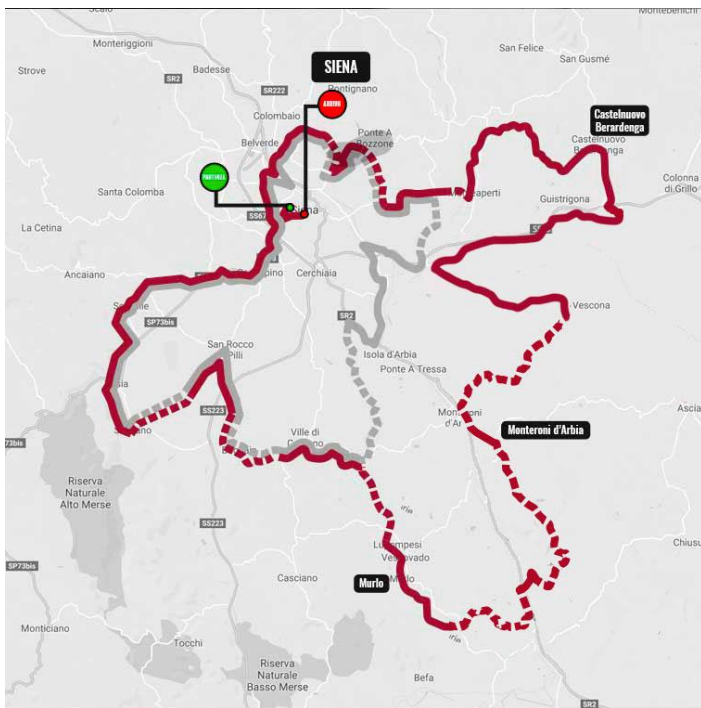


The 2026 (dates to be confirmed) Strade Bianche weekend is a celebration of early season cycling on the white gravel roads around historic Siena. The southernmost northern classic has only been in existence since 2007 but it has already established itself as a 'must see' and a 'must do' event.

An epic Gran Fondo, characterised by an alternation of asphalted and unpaved stretches in the unique landscape of the Crete Senesi. Seven thousand participants are ready to challenge each other on the same roads as the Pros.

This trip has something for everybody, both cyclist and non-cycling partners alike. A pro race, an Italian Gran Fondo, shopping and history, are you ready to ride into the legend?

The Gran Fondo that covers the same gravel roads tackled by the great champions of world cycling returns on Sunday 9th March. The start is set from the Fortezza Medicea (Medici Fortress) and the arrival arch is located in the splendid setting of Piazza del Campo, with the possibility of choosing between the long 138.5 km route (2250 metres of elevation gain and 10 gravel sections) or the shorter 86.8 km route (1350 metres of elevation gain and 6 gravel sections).

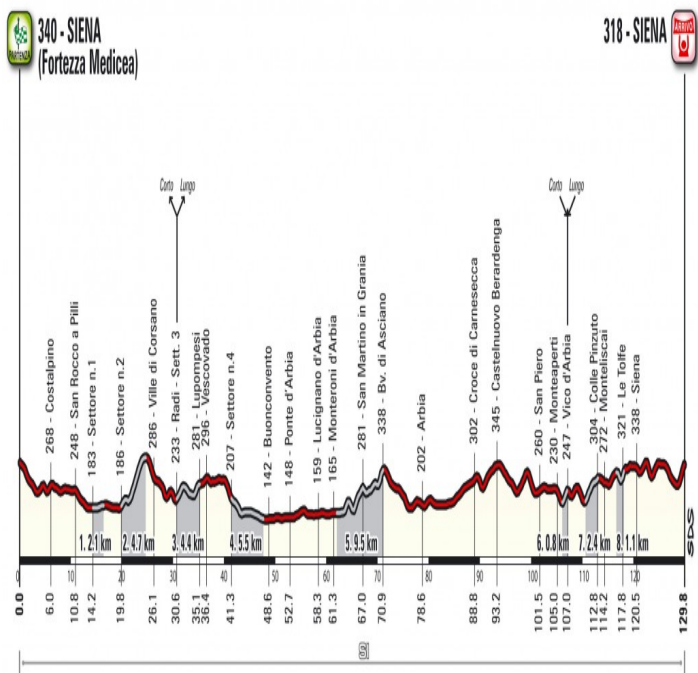
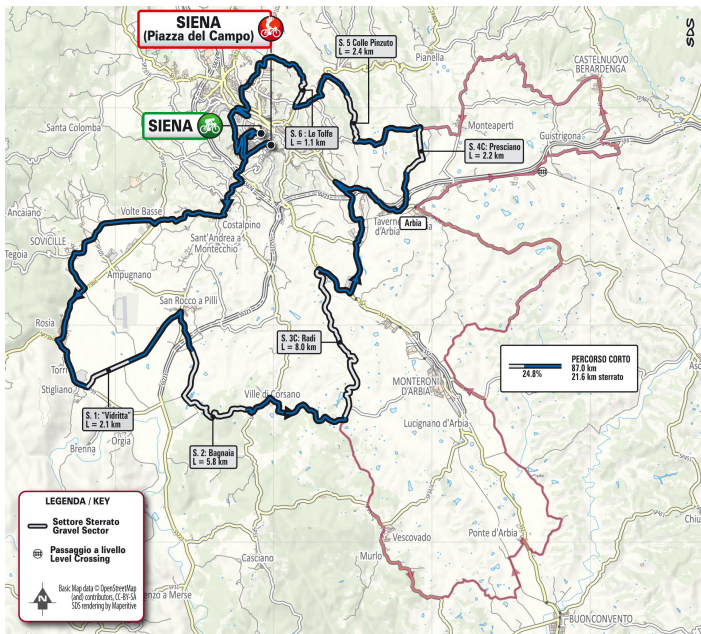


Departure from the Medici Fortress

After the start in the centre of Siena, the riders face the first undulating kilometres on asphalt before reaching the first three gravel sections (Vidritta, Bagnaia, Radi). At Radi, one can choose whether to continue on the long route or proceed on the short one.

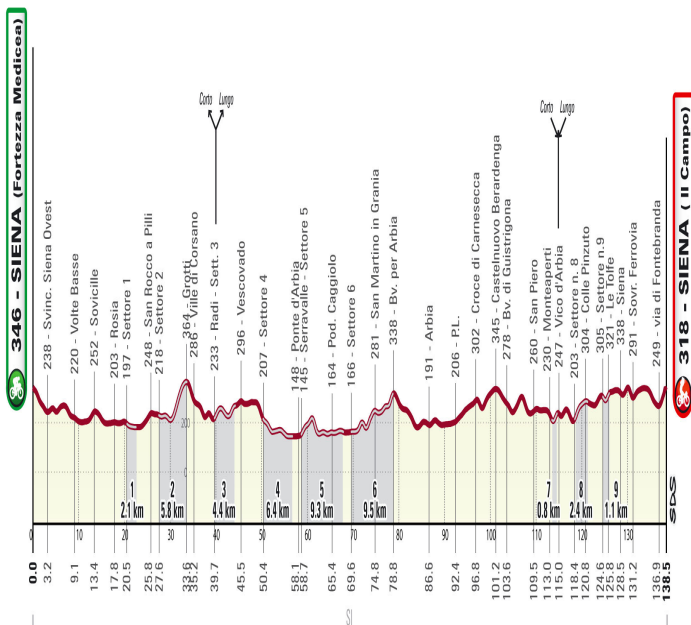
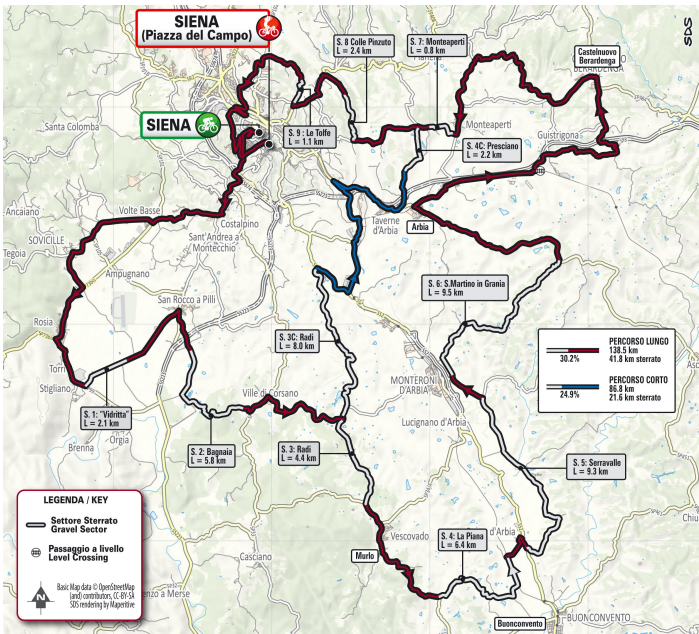
Shorter Route - [Itinerary Timetable](#) ↓ [GPX File](#) ↓

3 more gravel sections to be tackled after Radi (Prisciano, Colle Pinzuto, Le Tolfe) for a total of 22 km of gravel roads (24.8% of the route) divided into 6 sectors.



The Longer Route - [Itinerary Timetable](#) [GPX File](#)

The long route features a further 6 gravel sections (Piana, Serravalle, S. Martino in Grania, Monteperti, Colle Pinzuto, Le Tolfe) for a total of 42 km of dirt roads (30.2% of the route) divided into 9 sectors.



The Arrival in Piazza Del Campo

The last kilometres are the same for both routes. The first part winds its way outside the town of Siena, first downhill and then slightly uphill until 2 km from the finish line, where the Via Esterna di Fontebranda is tackled. At 900 m to go, the athletes will cross the Fontebranda Gate, where the cobbled paving begins. The gradient exceeds 10% until around 500 m from the finish line, with peaks of 16% in Via Santa Caterina. With 300 m to go, the road descends gently until the (flat) last few metres in Piazza del Campo.

The Rules of the Gran Fondo Strada Bianche 2024 [GFSBI Official Rules 2024](#) ↓

Inclusions

1. Hotel B&B
2. Pro Race
3. Entry to the Gran Fondo
4. Registration Package
5. Sportful Pro Classic Jersey
6. Technical Vest
7. Airport Transfers

Exclusions

1. Hotel personal tax
2. Your other personal hotel costs, such as your bar bill, etc
3. Other personal expenses
4. Personal insurance
5. Evening meal
6. It's recommended that you take out personal insurance

Itinerary

The 2025 Strade Bianche weekend is a celebration of early season cycling on the white gravel roads around historic Siena. The southernmost northern classic has only been in existence since 2007 but it has already established itself as a 'must see' and a 'must do' event

ENTRY TO THE GRAN FONDO

Your entry to the 2025 Gran Fondo Strade Bianche is confirmed and you will receive confirmation of your entry and race number in due course.

HOTEL IN SIENA

We are staying at a hotel in Siena with breakfast included each day and dinner on the Friday evening. *The choices and eating-out experience in Siena are endless and it is suggested that this is the preferred option, so we have not included an evening meal on Saturday and Sunday with this trip,*

YOU ARE IN SAFE HANDS

Our basic hotel package has lots included but you can choose to add additional services if required: bike rental etc.

2025 STRADE BIANCHE WEEKEND



FRIDAY 7th MARCH 2025 - ARRIVAL DAY

After arriving in Pisa and collecting your luggage and bike, you will be transported via coach to your hotel for the weekend, Hotel Executive in Siena. You will be given time to relax and prepare your bike before retiring to the bar for pre-dinner drinks with your fellow guests. We will be dining in the hotel restaurant which will include wine with your meal.

SATURDAY 8th MARCH 2025 - STRADE BIANCHE DAY

After breakfast and a final check over of the bikes, we will head over to the registration area to collect our race jersey and race bag, at the Fortezza di Santa Barbara (Fortezza Medicea).

For those of you not riding or taking a rest day, there is plenty of time to explore, what is indisputably one of the most beautiful towns in Italy. The Gran Fondo Strade Bianche starts and finishes in this once Etruscan settlement and is typically hijacked by cyclists for the entire weekend. However there is plenty of historic sights and plenty of shopping opportunities. There is also no better sports nutrition than Senese specialties: cinghiale (wild boar), Cinta Senese, pappardelle & pici pasta and cantucci biscuits, (vegetarian and vegan options are available)

Those out on a ride our route will take us to a couple of sectors to watch the riders of the pro peloton as they take on the white roads.

The men and women ride similar courses. Considering the big race day is on Sunday, it would be foolish to overextend ourselves. In as few as 60 km, you'll have the opportunity to get up-close and personal with the pro's. There's no other sport in the world that gives the fan such intimate viewing for free. That's why you've got to be there.

First on the itinerary is San Martino in Grania to take in some of the world's most consistently dominating female cyclists like Annemiek van Vleuten and Marianne Vos (subject to their participation), as they roll over the top of the 9.5km sector, with ramps of over 12%.



The women's 2024 battle to the finish

After the women pass and since we will be hungry, we head over to Asciano for lunch. The town of Asciano is dead-centre of the Crete Senesi or Tuscany's timeless lunar landscape. You'll have enough time for a primo piatto and a gelato before the clock starts ticking.

Next up on the itinerary is Monte Sante Marie: the iconic segment of L'Eroica and the best place to catch the pro men with their entourages. It's a jaw-dropping section of white roads, and not being part of the Fondo course, if you have the legs, Saturday is a perfect day to ride it, however its envisaged we will only ride a mile or two into the segment depending on levels of spectators and access.

We then head back to the hotel in time to catch the men in the last few kilometers of the race, before resting and preparing for your own race day.

SUNDAY 9th MARCH 2025 - GRAN FONDO DAY

You were able to see how the riders of the Men's and Women's cycling elite handled the white roads yesterday. Today it's your turn. Ride either the 139 km route with 31 kilometres of gravel roads or 86 kilometres with 21 kilometres of gravel. The race largely shares the course with the Womens Élite event. The route is twisty and undulating, with no lengthy climbs, but with punchy hills, especially on the unpaved parts.

After the race, we'll regroup have lunch before recovering at the hotel. Tonight, reflect on an amazing weekend, whether you were riding or not and celebrate with food and wine as we toast the fabulous hospitality of Siena.



MONDAY 10th MARCH 2025 - DEPARTURE DAY

After a hearty breakfast, it is time for us to transport you and your luggage back to the airport, in time for you to catch your flights home, with great memories and a sense of achievement.

The Story